

INSTALLATION AND USER MANUAL



**DUST COLLECTOR ADAMIK
series FT 630 and FT 650**

CONTENT

CONTENT.....	3
1. IDENTIFICATION DETAILS.....	4
2. DESCRIPTION OF THE DUST COLLECTOR.....	4
3. APPLICATION	4
4. SAFETY CONDITIONS.....	5
5. INSTALLATION AND OPERATION.....	6
5.1 INSTALLATION INSTRUCTIONS	6
5.2 OPERATING INSTRUCTIONS.....	6
5.2.1. Emptying of the waste bag.....	6
5.3 OPERATION OF THE DUST COLLECTOR.....	7
5.4 CONNECTION TO THE POWER SUPPLY NETWORK	7
5.5 LOCATION	8
6. MAINTENANCE	8
6.1 EMPTYING OF THE WASTE BAGS	9
6.2 MANUAL FILTER REGENERATION (button filter shaker, version SA) AND EMPTYING OF THE WASTE BAGS.....	9
6.2 AUTOMATIC FILTER REGENERATION (automatic regeneration, version A) AND EMPTYING OF THE WASTE BAGS	9
6.4 DISPOSAL	10
7. TECHNICAL SPECIFICATION	11
8. ACCESSORIES	12
9. WARRANTY	13
9.1 RESPONSIBILITY FOR DEFECTS.....	13
9.2 VOLUNTARY ADDITIONAL WARRANTY.....	13
9.3 EXCLUSIONS FROM RESPONSIBILITY FOR DEFECTS AND WARRANTY	13
10. OPERATION OF ELECTRIC MOTORS.....	14
11. SERVICE CONDITIONS.....	14
12. INSTALLATION	15
12.1 OVERVIEW OF COMPONENTS.....	15
12.2 INSTALLATION PROCEDURE	18
CERTIFICATE OF WARRANTY.....	30
CERTIFICATE OF QUALITY AND COMPLETENESS OF THE PRODUCT.....	31

1. IDENTIFICATION DETAILS

Identification details:



ADAMIK Company, s.r.o.
Paříková 910/9
190 00 Praha 9
DIČ: CZ26845318

2. DESCRIPTION OF THE DUST COLLECTOR

The filtration system consists of a filtration unit FT 630 or FT 650 with antistatic equipment and a connected fan, optionally between VAN 828 3 kW, VAN 403, VAN 831 4kW, VAN 831 7.5Kw, VAN 835 9.2 kW, VAN 840 11 kW.

The extracted material is carried by a piping system to the filtration unit, where the waste is separated and then collected in antistatic waste bags.

The separation vessel is equipped with antistatic filters in the upper part, through which the cleaned air returns to the working space.

Item	Material
Moving wheel of the fan (impeller)	steel
Body of the fan	steel
Body of the filtration unit	steel
Filter	PES 400 ASC antistatic
Waste bag	textile antistatic
Clamp	steel

The dust collector is designed for professional use - extraction of chips and sawdust from woodworking machines.

3. APPLICATION

The device is designed for the extraction of chips and sawdust from woodworking machines. Must not be used for highly flammable and explosive materials. It is not recommended for extraction of abrasive materials (eg. metals). Do not draw pieces of wood (knots, etc.) that may cause the impeller to break or deform. Can be used for outdoors without risk of fire.

4. SAFETY CONDITIONS

- Read the operating instructions before putting the extraction device into operation.
- Only persons who have been instructed in the handling of this device may work with the device.
- Protect the power cord from damage.
- The extraction device must not be used for the extraction of explosive dust (parts smaller than 0,5 mm)
- The extraction device must not be used in humid environments and in environments with an external risk of explosion.
- Before carrying out maintenance and repair work, switch off the on/off switch and pull the main plug out of the socket.
- Do not start the dust collector without attached waste bags and filters.
- It is forbidden to loosen the clamp of the filter or the waste bag while the machine is running!
- It is forbidden to connect the fan to the power unless it has been installed in the ventilation duct system or in machinery that is not equipped with a barrier against reaching the impeller!
- If the filter unit is connected to a source that also forms accidentally piece of waste larger than 2x2 cm, it is necessary to secure the fan against damage by inserting a knot catcher in front of the fan suction nozzle. It is forbidden to use this machine without this measure!
- Any manipulation inside the fan or filter unit is forbidden, unless the hood is switched off and secured against accidental start-up by another person!
- Do not carry out maintenance and repair work inside the hose or in the connected pipes to the suction port of the hood, unless you are ensured that the machine is switched off and secured against accidental start-up by another person.
- It is not allowed to remove filters and waste bags while the machine is running.
- These machines are not products for immediate use and may only be put into operation after they have been installed in machinery, air-conditioning systems or if their safe operation has been ensured by a cover against reach to the moving parts of the machine. Safety accessories (eg. motor protection grille or guards) must not be disassembled, bypassed or taken out of service.
- Use suitable lifting equipment when handling products. Do not lift the fans by the connecting cables, terminal block, impeller or suction opening. Do not allow blows and shocks. Store the exhaust system in a dry place protected from the weather and dirt until final installation.



Before carrying out any maintenance, always switch off the power - by switching off all poles of the supply or by pulling the plug out of the socket - and secure the machine against unintentional start-up by another person.



Fans and impellers can have sharp edges and corners that can cause injury. Care must be taken.

Risk of an extremely predictable situation

Catching of an object on the impeller (long wet chips, rag, paper) will result in a sudden vibration. The machine must be switched off, than wait until the impeller has stopped, unplug the power cord from the main socket. Then dismantle the pipes (hoses, manifolds), clean the impeller and reassemble it.

Further procedure according to paragraph 5.2.

The manufacturer or a trained person must carry out a technical inspection at least once a year, which consists, for example, in checking the filter for damage, checking the airtightness of the machine and the correct function of the control and regulation mechanism.

5. INSTALLATION AND OPERATION


5.1 INSTALLATION INSTRUCTIONS


Equipotential bonding

The conductive parts of the extraction device must be connected to each other and to the protective conductor of the power supply. You must ensure that additional cables, as anticipated by the manufacturer, are not removed or damaged.

The suction device is delivered disassembled. The customer will carry out the installation himself or it is possible to install it by the service technician of the manufacturer or a certified dealer.

Assembly instructions can be found in section 12 .

 *To dissipate the electrostatic charge, the extraction device must be grounded (either by connection to the protective connection or to the grounding itself) by a person with the appropriate electrical qualification.*

 *The room in which the extraction device is located must be adequately ventilated. Ventilation must comply with relevant national standards*

5.2 OPERATING INSTRUCTIONS

- Turn the switch on to put the extraction device into operation.
- Turn the switch off to deactivate the extraction device.
- When reducing the extraction power, the filter must be cleaned first.
- The operator must regularly check the suction power and condition of the filter.

5.2.1. Emptying of the waste bag

- Switch off the extraction device.
- Wait about 2 minutes for the whirling dust to settle.
- Unclip the waste bag from the machine body and take it outside the workplace.
- Pour the contents of the waste bag into a waste container or polyethylene bag. Take care of not to spray the waste.
- Waste disposal must be carried out in accordance with the relevant provisions and the Waste Management Act.
- Attach the emptied waste bag back to the machine body using clamping tape.



The waste bag must be fitted correctly. Improper fitting of the bag can lead to leaks. The bag, which shows signs of leakage even when used correctly, must be replaced. If a disposable polyethylene bag is used, a simple bag change must be performed.



The extraction device must not be put into operation without attached filter and waste bag and without the connected manifold or suction piping or hose.



***Never wash filters and waste bags in the washing machine!
Never dry filters and waste bags in the dryer!
There is a risk of damage to filters, bags and appliances!***

5.3 OPERATION OF THE DUST COLLECTOR

Before starting operation for the first time, the following points must be checked:

- The electrical connection has been made correctly and completely.
- Protective conductor has been connected - motor protection has been installed.
- Insured and safety devices are in place.
- Remains of installation material and foreign objects and materials have been removed from the fan housing area.



The direction of rotation must correspond to the arrow indicating the direction of rotation (three phases)!



The wiring data corresponds to the specifications on the nameplate: Maximum voltage +6%, -10%, according to IEC 38.

*The rated current must not be exceeded by more than 5% at the rated voltage.
Check that the motor protection is working.
Check that the engine runs smoothly (without non-standard sounds).*


- **Start-up and shut-down:** Start the extractor by turn on the switch. After a few seconds of "idling", start up the suctioned machine-tool. After finishing machine-tool operation, switch off the extraction device after a short run (a few seconds).
- **Maintenance:** always clean the filter bag after the shift and empty the waste bag if necessary.
- In the event of a power failure, the operator must turn off the power switch and unplug the power cord. Restart is performed according to the instructions above.
- The workplace must be equipped with an appropriate fire extinguisher.


5.4 CONNECTION TO THE POWER SUPPLY NETWORK


This machine is supplied as a stationary filter unit with a fan and is not equipped with any connecting cable or switch. (If delivery with switchboard or switch is not agreed.)

Therefore, in order to ensure start-up and shut-down, it must be connected to the main switchboard of the workshop, which is equipped with motor protection according to valid regulations and standards for electrical installations in these environments.


Switching on and off is then performed from the workshop area with a switch at the nearest place (on the wall near the workplace, etc.) or simultaneous automatic start with woodworking machines. For safe shutdown during service or dumping, we recommend plugging of this machine into a specially designed socket near the machine using a movable inlet and plug, and always remove this plug from the socket during these operations.

 *The electrical connection may only be carried out by a person with sufficient authorization according to the wiring diagram in the terminal box cover of the electric motor according to the markings on the terminals or cables.*

 *All three-phase fans of the filter units are delivered from the factory for connection to a three-phase 400 V mains.*

 *The fan must be connected in accordance with the air flow direction (see arrow on the fan), otherwise there is a risk of overloading the motor!*

5.5 LOCATION

 *It is necessary to define a safety zone around the dust collector within a distance of 2 m from all parts of the dust filtration unit and the connected fan. Flammable substances and settled flammable dust must not be stored in the safety zone. Unauthorized persons must not be present in the safety zone during operation of the dust collector!*

It is recommended to place the dust collector in a separate space in which flammable substances are not stored and no persons are present during operation. The dust collector, fan and the surroundings must be kept clean.

6. MAINTENANCE

The fan, the filter unit and the surroundings must be kept clean and free of dust and no objects stored or supported by the device.

It is necessary to regularly check the condition of the waste bags.

 *It is necessary to ensure regular inspection to prevent overfilling of the waste bag!!*

The optimal time to empty when the waste level is reached is about 100 mm below the waste bag clamp edge. Due to the fact that waste bags are opaque, it is necessary to determine the condition continuously by touch.

6.1 EMPTYING OF THE WASTE BAGS

- Switch off the extraction device.
- Wait about 2 minutes for the whirling dust to settle.
- Unclip the waste bag from the machine body and take it outside the workplace.
- Pour the contents of the waste bag into a waste container or polyethylene bag. Take care of not to spray the waste.
- Waste disposal must be carried out in accordance with the relevant provisions and the Waste Management Act.
- Attach the emptied waste bag back to the machine body using clamping tape.

6.2 MANUAL FILTER REGENERATION (button filter shaker, version SA) AND EMPTYING OF THE WASTE BAGS

- Switch off the fan on the distribution box.
- An automatic regeneration cycle occurs when the fan is turned off.
- Push the filter regeneration button and **hold it for max. 5 sec.!!** Repeat this procedure 2 – 4x.
- Switch off and secure the main switch against accidental start-up by another person and wait approx. 2 minutes for dust to settle in the waste bags and then release the clamping straps and empty the waste bags.
- Dispose of waste have to be in accordance with the relevant provisions and the Waste Management Act.
- Put the emptied bags back on and fasten them to the designated place on the filter unit and restart them only after checking that the bags have been fastened.



Start of the filter regeneration must not be performed unless the waste bags on the machine are fitted and perfectly fastened !!

6.2 AUTOMATIC FILTER REGENERATION (automatic regeneration, version A) AND EMPTYING OF THE WASTE BAGS

- Switch off the fan on the distribution box.
- An automatic regeneration cycle occurs when the fan is turned off.
- Wait for the regeneration cycle to complete.
- Switch off and secure the main switch against accidental start-up by another person and wait approx. 2 minutes for dust to settle in the waste bags and then release the clamping straps and empty the waste bags.
- Dispose of waste have to be in accordance with the relevant provisions and the Waste Management Act.
- Put the emptied bags back on and fasten them to the designated place on the filter unit and restart them only after checking that the bags have been fastened.
- The regeneration cycle continues even after the main switch is turned on. It is necessary to wait until the cycle ends and then the fan can be started again. The fan cannot be started in the filter regeneration cycle.



Start of the filter regeneration must not be performed unless the waste bags on the machine are fitted and perfectly fastened !!

Before performing maintenance, service, or repairs, ensure the following:

- The power supply must be switched off (main switch switched off and locked).
- The fan impeller is completely stopped.
- Observe all safety regulations.
- The fan must be cleaned as needed, at least once per shift, to prevent dust from settling on the fan housing and motor.



In the event of increased fan vibration (due to the ingress of a larger piece of debris), the impeller must be replaced to prevent damage to the bearings and bushings in the motor shield. Balancing or replacement is performed by the manufacturer or a certified service center.

6.4 DISPOSAL

Dispose of the fan housing, sheet metal parts and impeller as scrap metal.

Dispose of filters according to the type of material with which the bags are soiled, always with the legal requirements for disposal of the material.

7. TECHNICAL SPECIFICATION

	Unit	Type	
		FT 630 A 3 kW	FT 630 A 4 kW
Motor power	kW	3	4
Voltage	V	400	400
Suction capacity (max)	m ³ /h	6 820	8 800
Inlet underpressure (max)	Pa	3 000	3 000
Inlet	mm	280	315
Waste bags volume	l	900	900
Noise	dB	76	78
Filtration area	m ²	30	30
Height	mm	2 950	2 950
Width	mm	810	810
Length (including fan)	mm	3 330	3 330
Weight of dust collector	kg	245	245
Weight of fan	kg	85	90

	Unit	Type	
		FT 650 A 4 kW	FT 650 A 7,5 kW
Motor power	kW	4	7,5
Voltage	V	400	400
Suction capacity (max)	m ³ /h	8 800	9 600
Inlet underpressure (max)	Pa	3 000	4 850
Inlet	mm	315	315
Waste bags volume	l	900	900
Noise	dB	78	83
Filtration area	m ²	50	50
Height	mm	3 950	3 950
Width	mm	810	810
Length (including fan)	mm	3 330	3 330
Weight of dust collector	kg	270	270
Weight of fan	kg	90	164

	Unit	Type	
		FT 650 A 9,2 kW	FT 650 A 11 kW
Motor power	kW	9,2	11
Voltage	V	400	400
Suction capacity (max)	m ³ /h	11 200	14 000
Inlet underpressure (max)	Pa	5 000	5 400
Inlet	mm	355	400
Waste bags volume	l	900	900
Noise	dB	83	85
Filtration area	m ²	50	50
Height	mm	3 950	3 950
Width	mm	810	810
Length (including fan)	mm	3 330	3 330
Weight of dust collector	kg	270	270
Weight of fan	kg	204	210

	Unit	Type	
		FT 650 LZ A 3 kW	FT 650 LZ A 4 kW
Motor power	kW	3	4
Voltage	V	400	400
Suction capacity (max)	m ³ /h	6 820	8 800
Inlet underpressure (max)	Pa	3 000	3 000
Inlet	mm	280	315
Waste bags volume	l	-	-
Noise	dB	76	78
Filtration area	m ²	50	50
Height	mm	3 300	3 300
Width	mm	1 200	1 200
Length (including fan)	mm	3 490	3 490
Weight of dust collector	kg	310	310
Weight of fan	kg	85	90

	Unit	Type	
		FT 650 LZ A 7,5 kW	FT 650 LZ A 9,2 kW
Motor power	kW	7,5	9,2
Voltage	V	400	400
Suction capacity (max)	m ³ /h	9 600	11 200
Inlet underpressure (max)	Pa	4 850	5 000
Inlet	mm	315	355
Waste bags volume	l	-	-
Noise	dB	83	83
Filtration area	m ²	50	50
Height	mm	3 300	3 300
Width	mm	1 200	1 200
Length (including fan)	mm	3 490	3 490
Weight of dust collector	kg	310	310
Weight of fan	kg	164	204

8. ACCESSORIES

- Waste bag PVC
- Waste bag textile
- Standard filter
- Metal clamps
- Hoses
- Piping, fittings...

9. WARRANTY

The warranty period is 12 months from the date of sale.

The warranty does not cover defects caused by improper handling or use for purposes other than those specified in the User manual.

9.1 RESPONSIBILITY FOR DEFECTS

By law, the manufacturer is liable under the contracts for consideration (purchase, work, etc.) for the fact that the goods or performance at the time of delivery are free of defects. Liability applies to all parts (except point 9.3) as well as to labor, transport and travel costs. Any consequential damages are excluded. Consumer buyer - legal liability for defects for a period of 2 years from the date of issue of the sales document. Buyer entrepreneur - pays liability for defects for 6 months from the date of issue of the sales document. In single shift operation. Additional arrangements always require written form, oral promises are not valid.

9.2 VOLUNTARY ADDITIONAL WARRANTY

Compared to the statutory liability for defects, a voluntary additional guarantee is a voluntary undertaking that the goods or performance beyond the statutory liability for defects will remain free of defects for a certain period of time. The guarantee requires a written form. Oral agreements are excluded. The warranty only applies to mechanical parts (with the exception of point 9.3), it does not apply to labor, transport and travel costs. Any consequential damages are excluded.

The seller provides a warranty for a period of 12 months or a maximum of 1600 operating hours for parts of mechanical components (except point 9.3).

The seller provides a warranty for 6 months for spare parts (except point 9.3).

In the case of used goods, only the statutory provisions on liability for defects apply, which is 1 year for the consumer buyer and 3 months for the entrepreneur buyer.

9.3 EXCLUSIONS FROM RESPONSIBILITY FOR DEFECTS AND WARRANTY

- If the defect did not occur at the time of delivery.
- In case of damage to the goods during transport (these damages must be resolved with the shipping company upon receipt, all shipments are sent insured).
- Defects caused by improper use or overloading (classification of hobby use, craftsman, professional, industrial).
- Defects caused by unprofessional installation, unprofessional commissioning, unprofessional handling, operation or storage or neglect of care of the goods.
- If the prescribed operating or installation conditions are not observed (main board of the machine, electrical distribution, compressed air distribution, exhaust distribution).
- If a defect has occurred due to improper handling or external forces (eg. scratches, dents, twists, etc.).
- No liability is accepted for all consequential damages (such as unforeseeable damages).
- No liability is accepted for wear related to the appearance and as a result of everyday use (eg. paint damage, scratches, etc.).
- Does not accept responsibility for any defects caused by pollution.

- No liability is accepted for defects caused by non-compliance with the instructions in the operating instructions or maintenance instructions or arising from use that is in conflict with the operating instructions or normal use.
- No liability is accepted for consumable parts (eg. bearings, belts, gears, segments, threaded rods, threaded nuts, teeth, gears, chip breakers...) as well as plastic parts (eg. handles, levers, stickers, plugs, covers, squeegees, roller carriers, rubberized rolls...).
- No liability is accepted for defects caused by modifications, repairs, sharpening and manipulations not performed by the authorized personnel of the manufacturer or certified dealer or the authorized service of the manufacturer or certified dealer.
- No liability is accepted for defects resulting from corrosion, fire or water damage.
- No liability is accepted for defects resulting from external influences, such as 2-phase operation, faulty electrical protection, undervoltage, overvoltage (visibly burned components or printed circuits) except for normal deviations, lightning strikes.
- Liability according to the valid regulations of the given country for motors, electric switches/switches, electric control boards, etc.
- Violation of the protective seal, information label or serial number, unless damage occurs during normal use. Seals and serial numbers are an integral part of the goods and do not limit the buyer's right to use and manipulate the goods to the full extent of what the goods are intended for.
- Electrical use of goods in conditions that do not correspond to their temperature, dust, humidity, chemical and mechanical influences of the environment, which is directly determined by the seller or manufacturer.
- Damage caused by excessive loading or use contrary to the conditions stated in the documentation or general principles.
- Performing an unqualified intervention or changing parameters.
- Goods that have been adjusted by the customer (painting, bending, etc.), if the defect was a result of this adjustment.
- Damage from natural elements or force majeure.
- The use of incorrect or non-genuine consumables, or any damage resulting therefrom, unless such use is normal and has not been ruled out in the operating instructions.

10. OPERATION OF ELECTRIC MOTORS

During operation, it is necessary to supervise in particular:


- the correct function of the extraction device and its smooth operation,
- take care of the cleanliness of the machine and its surroundings,
- load the machine according to its label values and check the heating of the bearings,
- regularly check or renew the grease filling, which is sufficient for 6000 operating hours.


11. SERVICE CONDITIONS

In the event of any failure during the warranty or post-warranty period, contact the manufacturer or service organization.

12. INSTALLATION

Before starting the installation, it is necessary to read the instructions for installation and use of the hood. The individual assembly steps must be carried out in the exact order given in this manual.

 *To comply with all safety conditions, assembly must be performed by a group of 2 people in special clothing that protects the body from possible injury.*

 *The machine cannot be assembled by persons under the influence of alcohol, drugs or any other narcotics. Otherwise there is a risk of injury or death.*

12.1 OVERVIEW OF COMPONENTS

	Dust collector body (part 1, 2)	1 ks
	Upper assembly	2 ks
	Lower assembly	2 ks
	Filter hangers	6 ks
	Metal clamp UP550	4 ks
	Upínací páska UP550	4 ks
	Filter F220/1500 (FT 630) Filter F220/2500 (FT 650)	28 ks



Lid for mounting the filter

28 ks



Screws M6, M8 (set)

1 ks



Flat washer (set)

1 ks



Nut M6, M8 (set)

1 ks



Seal (set)

1 ks



Piping clamp

3 ks



Legs

4 ks



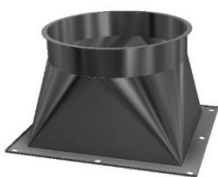
Upright (upper legs)

4 ks



Spring bracket

4 ks



Diffuser

1 ks



Arc 90st.

1 ks



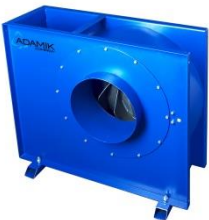
Connecting pipe or hose

1 ks



Switchboard incl. connecting plugs

1 ks

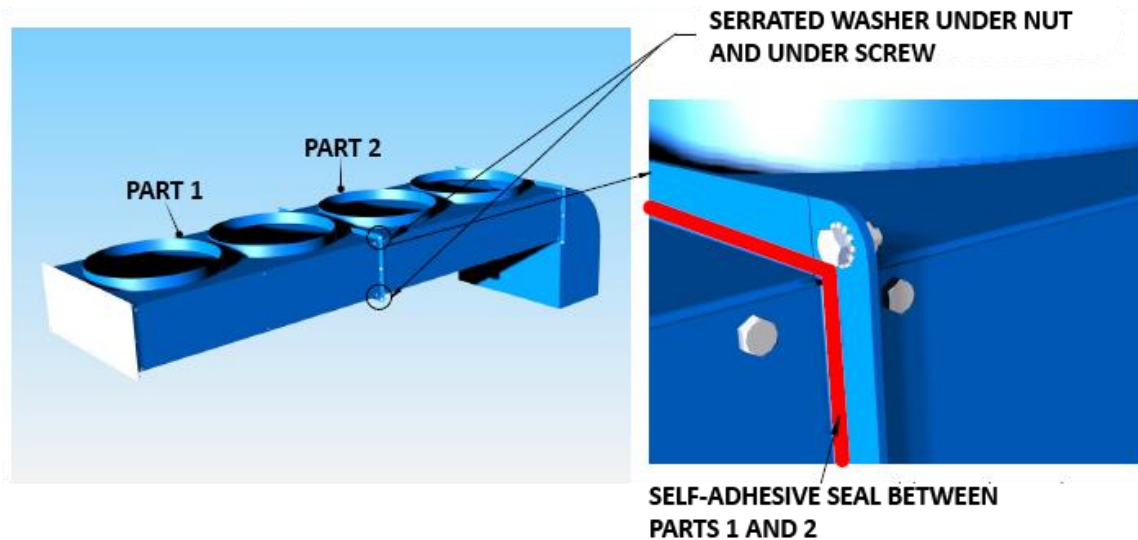


Fan

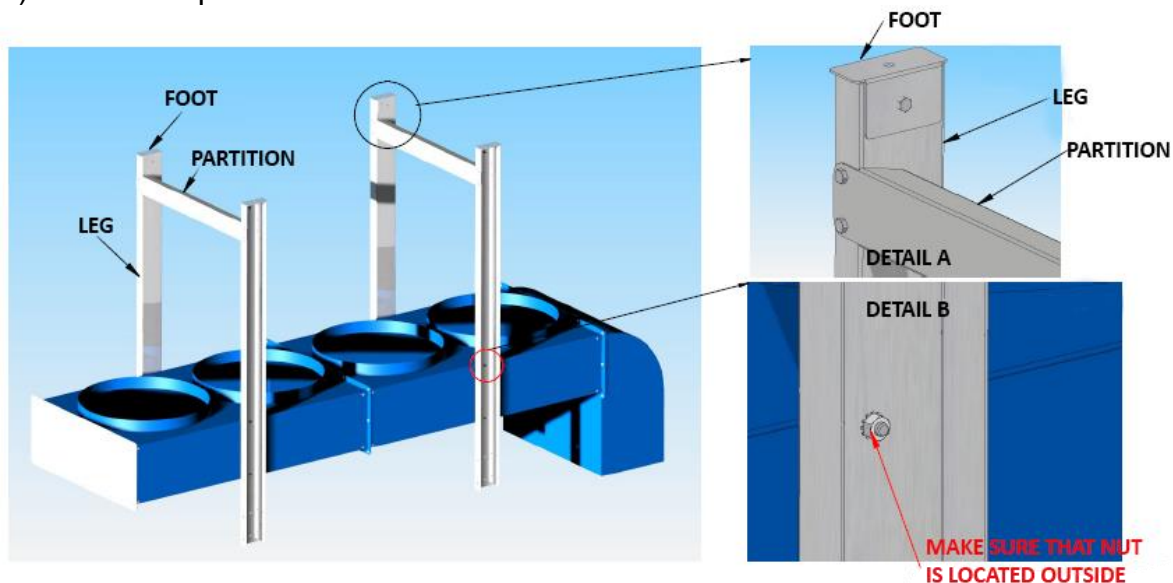
1 ks

12.2 INSTALLATION PROCEDURE

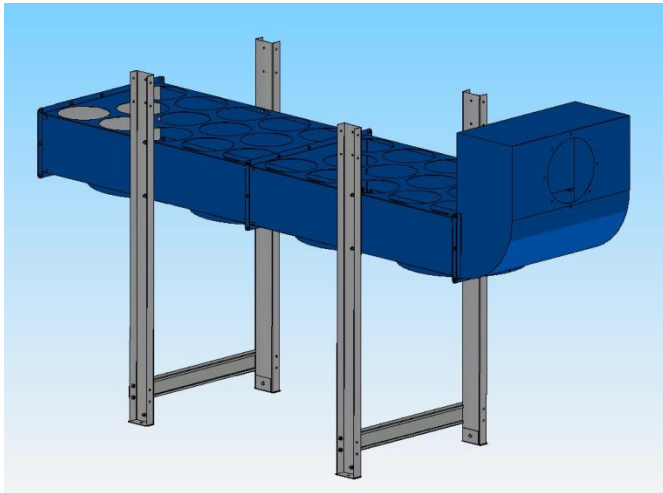
- 1) Glue the enclosed self-adhesive seal to the connecting flange of part 1 or part 2 in the place shown in the figure.
- 2) Connect part 1 and part 2 with M6x12 screws and nuts. Use a flat washer under the nut.
- 3) Connect part 1 and part 2 at the point indicated in the figure (electrical connection) with M6 screws and nuts. Use a fan washer under the nut and under the screw. This is how the filter chamber is assembled.



- 4) Fasten the feet to the legs with an M8x16 screw. Use a flat washer under the nuts. See figure "Detail A".
- 5) Attach the legs to the assembly of parts 1 and 2 (filter chamber) using M8x146 screws and nuts, see figure "Detail B". Use a flat washer under the screws and nuts. The screw must be on the inside of the filter chamber.
- 6) Fasten the partitions with M8x16 screws and nuts. Use a flat washer under the nuts.



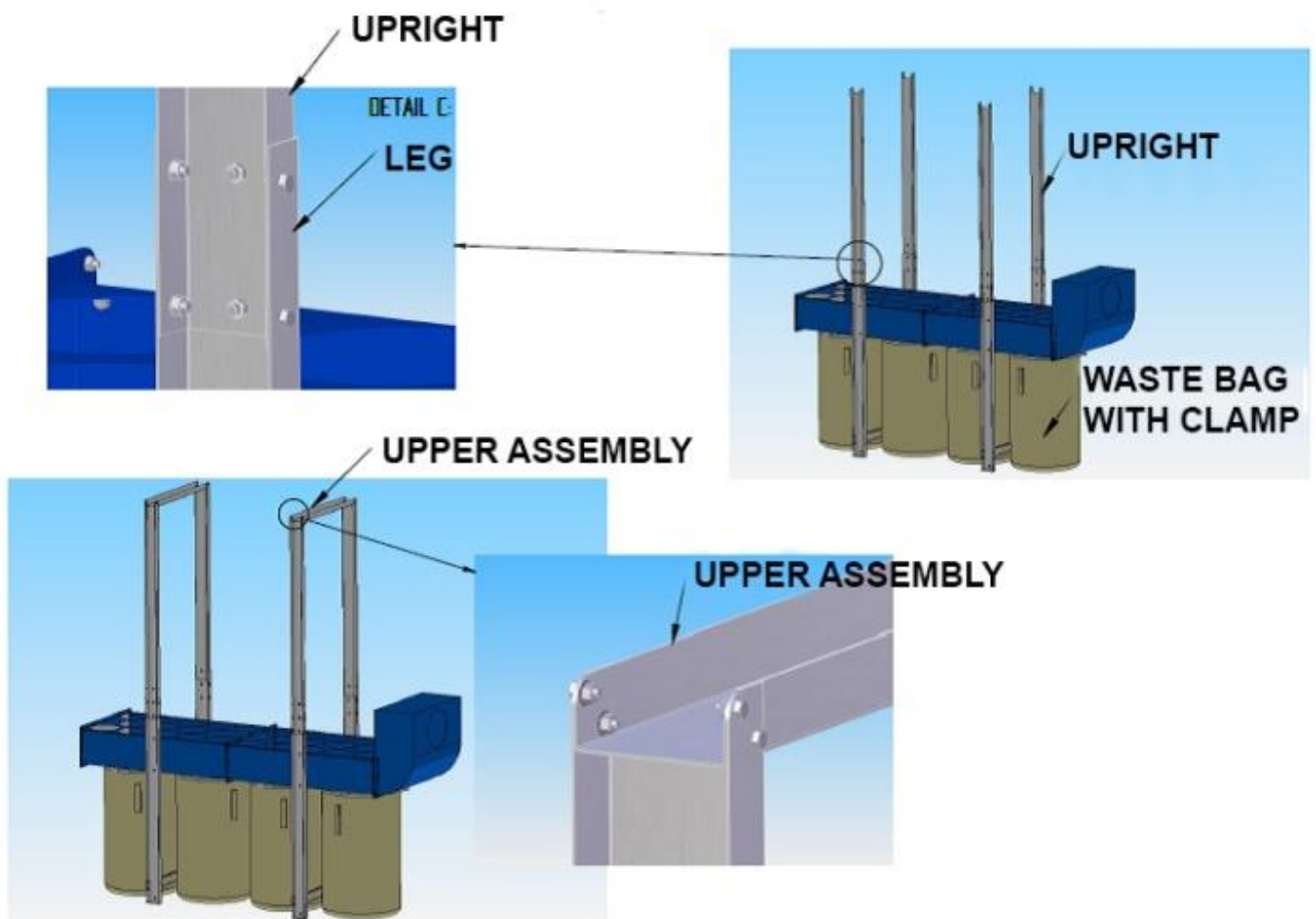
7) Place the unit on its legs.



8) Attach the lower waste bags using the metal clamps.

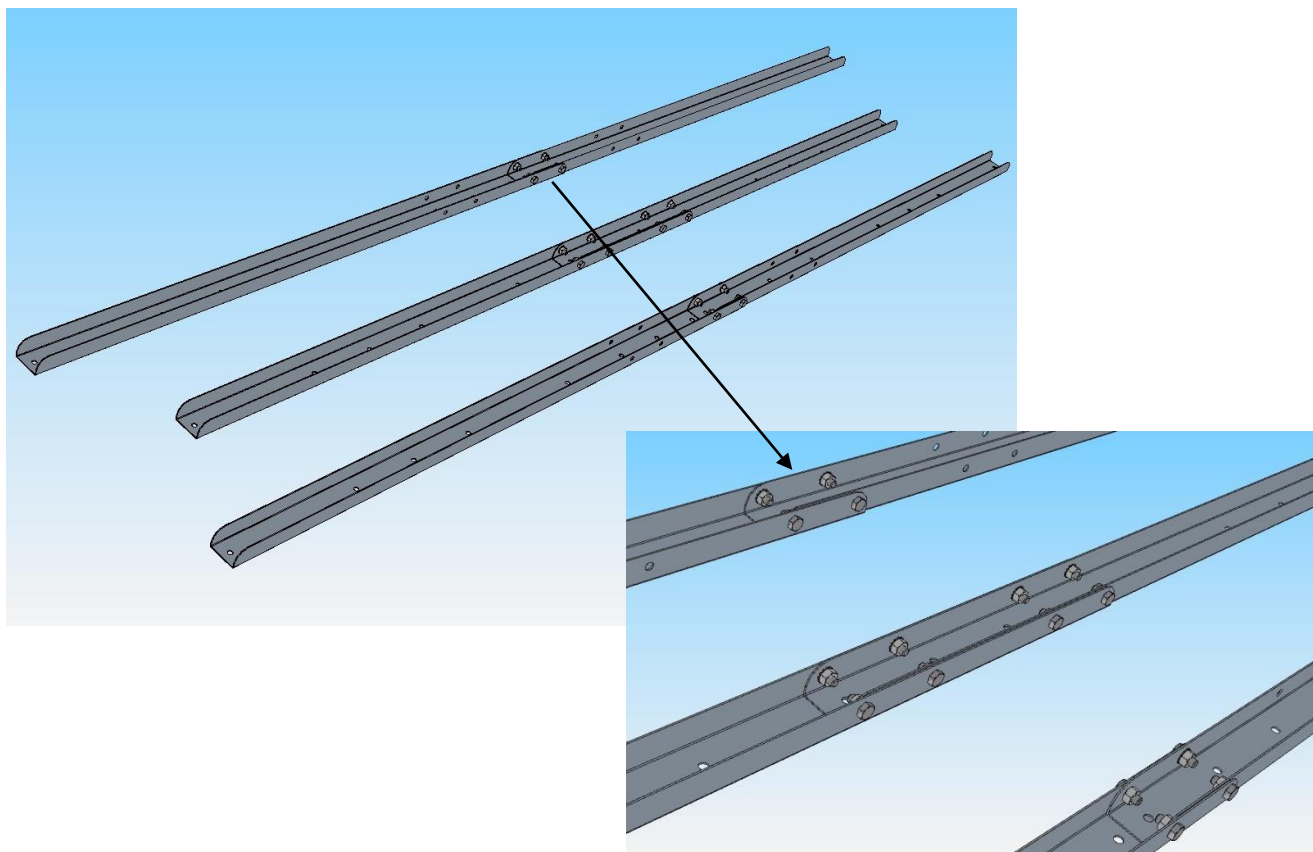
9) Fasten the uprights (upper legs) to the legs with M8 screws and nuts according to Detail C. Use a flat washer under the nuts.

10) Fasten the upper partitions with M6x12 screws and self-locking nuts. Use a flat washer under the nuts.



11) Join the filter hangers (short part with long part) so that two pieces of long assembly and one piece of short assembly are formed - see the pictures below.

For the version with filter regeneration, use M8x16 screws and M8 self-locking nuts.



12) Fasten the central filter hanger (short assembly) to the shaker plate with M8x16 screws and M8 nuts - see pictures below.

13) Prepare eight filters - insert the filter lids into the upper part of the filters with a thread through the hole ($d = 8 \text{ mm}$) so that the thread is outside the filter.



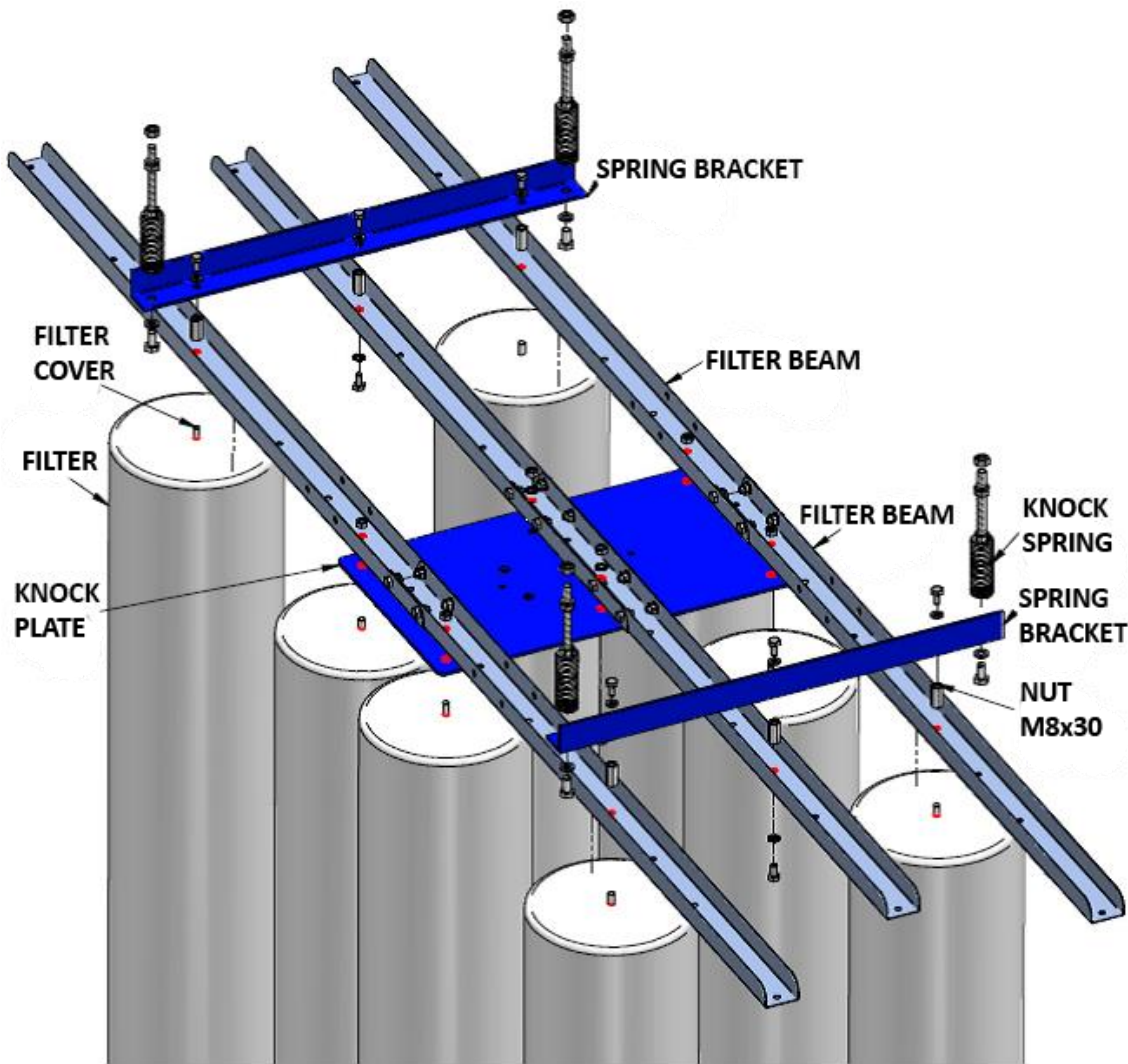
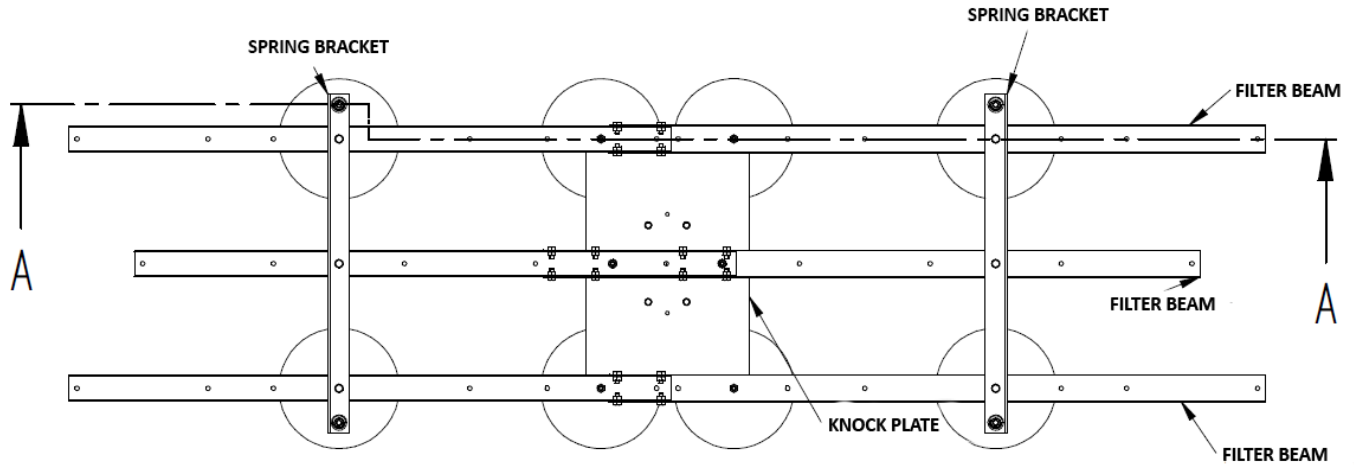
14) Attach the longer filter hangers to the shaker plate using the filter lid with the threaded filter and the M8 self-locking nut - see the figures below.

15) Fasten the remaining filters with lids to the longer hangers at the edges using the extended M8 nut.

16) Fasten the M8 extension nuts to the center filter hanger (see figure) using M8x16 screws. Use flat washers under the screws.

17) Fasten the spring bracket to the M8 extended nut using M8x16 screws. Use flat washers under the screws.

18) Fasten the shaker spring to the spring bracket with M10x20 screws. Use flat washers under the screws.

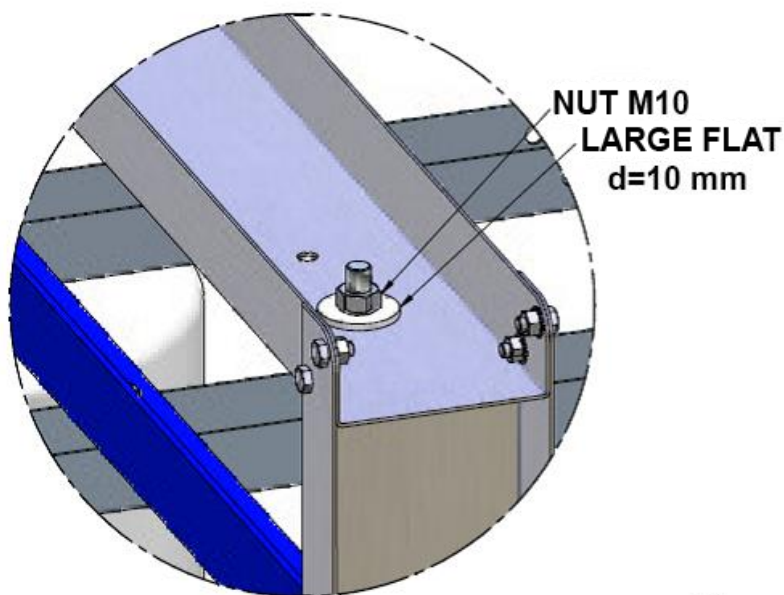


19) Hang the assembled filter structure into the end holes of the upper assembly using the upper thread of the flap springs and the M10 nut. Use a large washer under the nut - see the picture below.

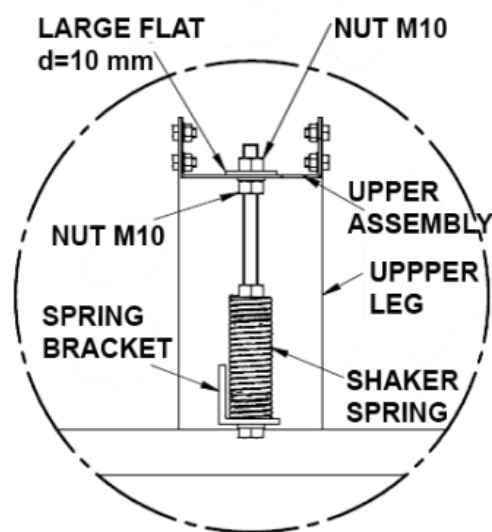
The structure is now in the lowest position at the end of the M10x150 threaded rod.

20) Prepare the remaining twenty filters - insert the filter lids into the upper part of the filters with a thread through the hole ($d = 8 \text{ mm}$) so that the thread is outside the filter.

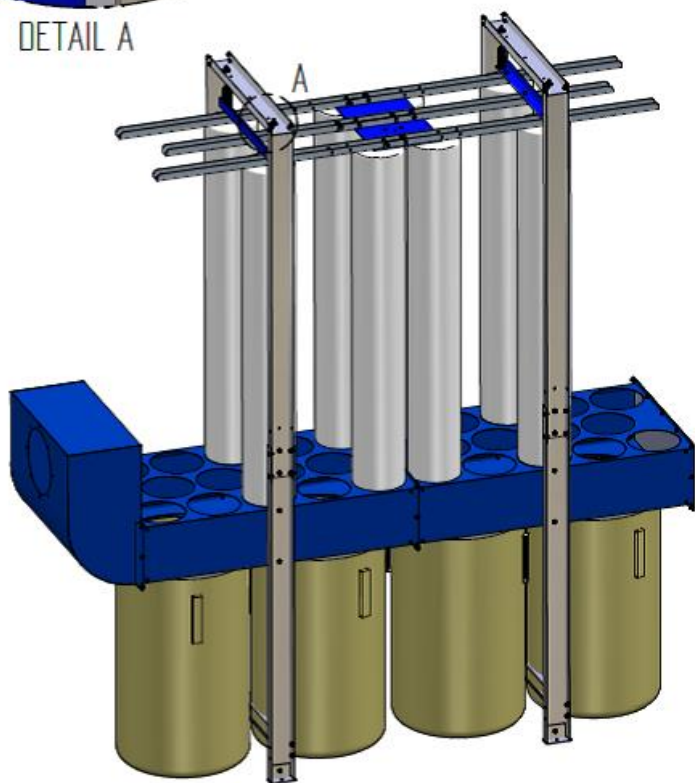
21) Attach the remaining filters to the remaining holes in the filter brackets using the filter lid and M8 nut. Use flat washers under the nut.



DETAIL A



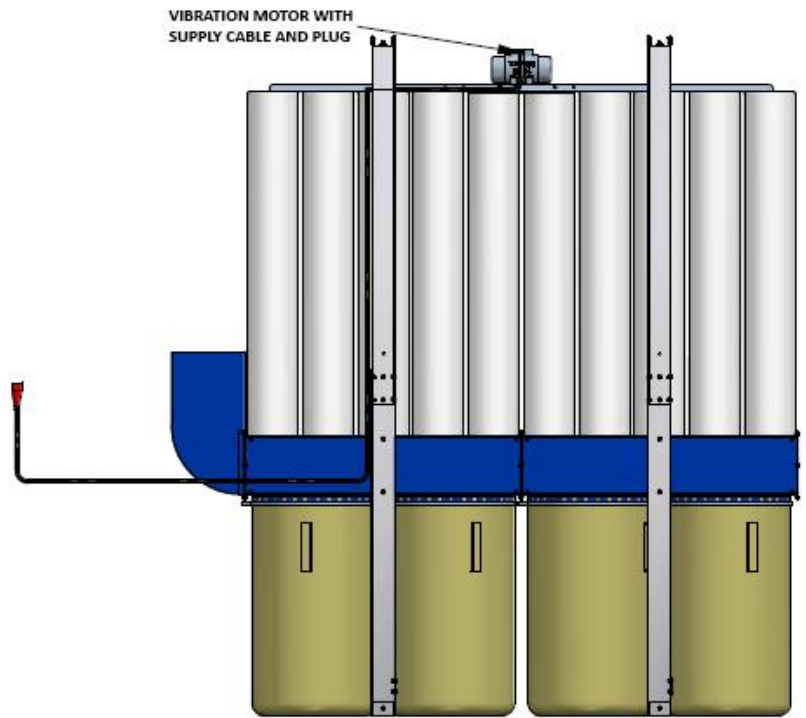
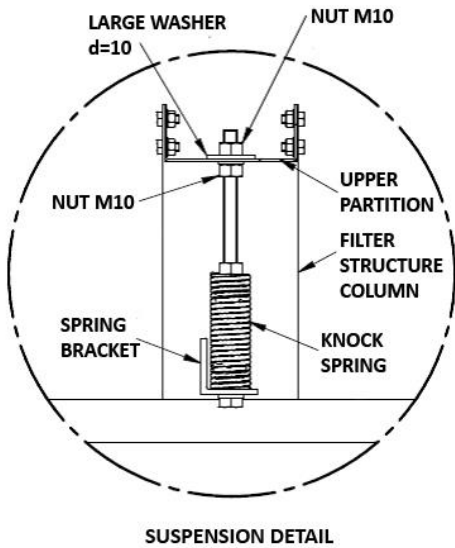
DETAIL OF FILTER HANGING



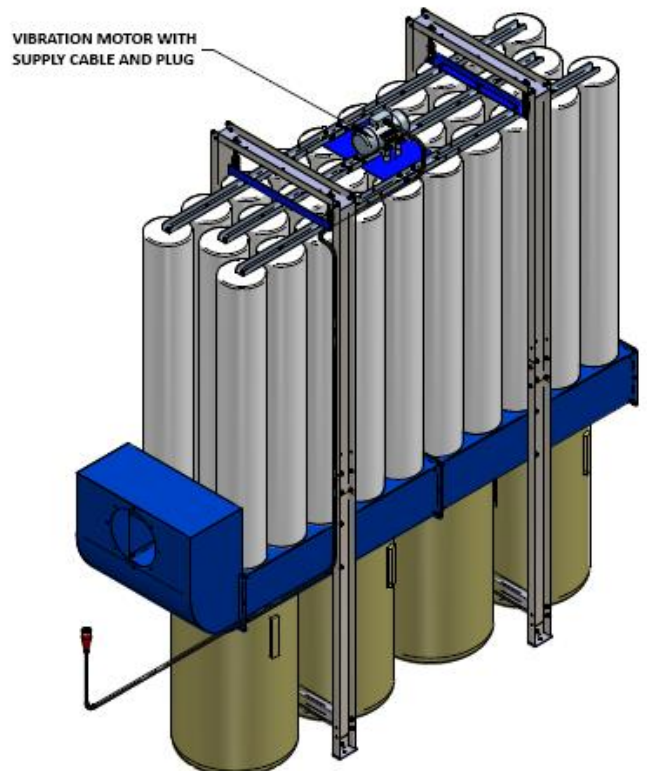
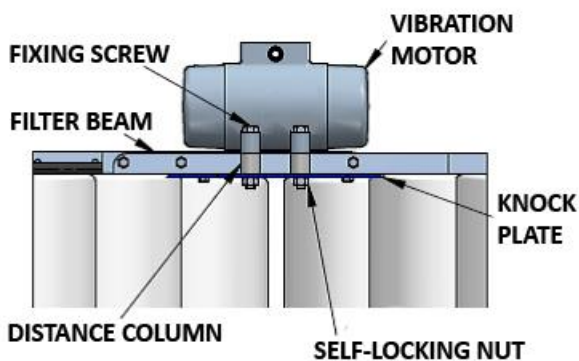
22) Place the vibration motor on the spacers. Fasten the vibrating motor to the shaker plate with 70 mm long screws and self-locking nuts - see detail below.

23) Insert the lower part of the filters into the holes in the unit body by pressing the elastic ring in the lower rim of the filter so that the filter snaps firmly into the corresponding hole by depressing it on the filter.

24) After fitting the filters, loosen the lower M10 nuts as shown below and tighten the filters appropriately by tightening the upper M10 nut. Then tighten the lower M10 nuts to the upper rail. This tightens the filters.



VIBRATION FIXING DETAIL



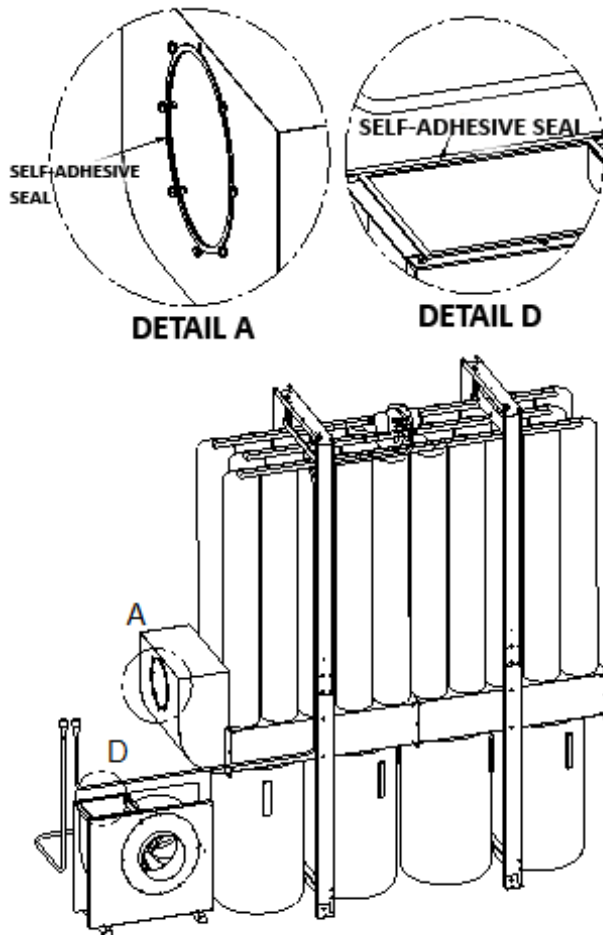


*Filter bags should be slightly tensioned in the upper position of the filter frame !!!
Excessive tensioning of the filter bags can cause them to fall out of the hood body!
Too little bag tension causes less powerful flap (regeneration)!*

25) Apply self-adhesive seals as shown below.



Improperly sealed seals can cause connection problems.



26) Fasten the connecting fittings (transition from square to round to fan, bend, connecting pipe or hose) between the fan and the filter unit with M8 screws with a fan washer on the round flange and on the fan with M8 screws and washers according to detail E.

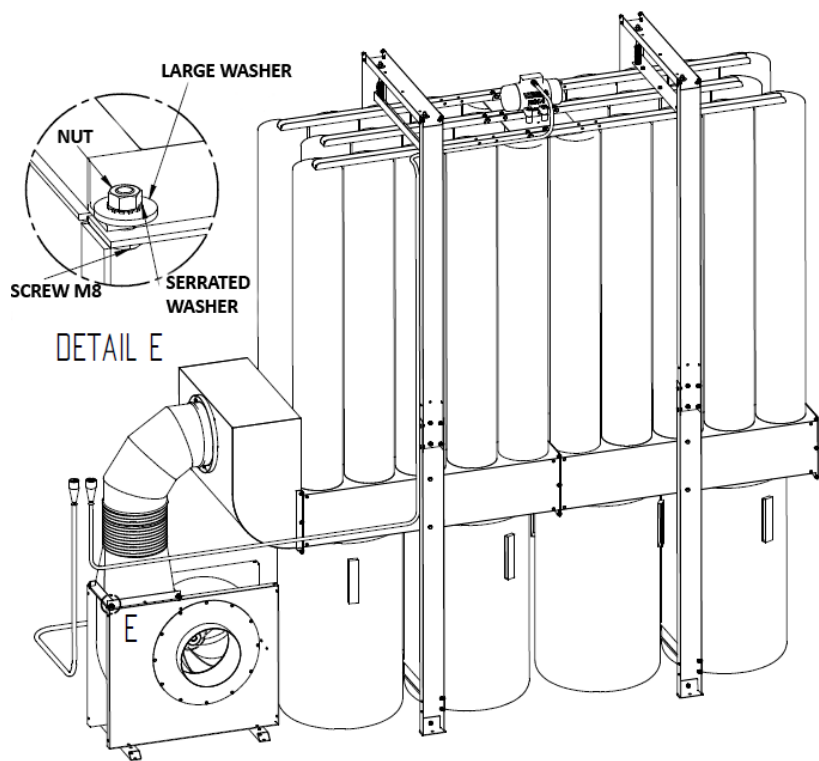


The work listed below may only be carried out by persons authorized to install electrical equipment!

27) Fasten the supply cable in the protective hose to the structure with fastening straps as shown on page 22.

28) Fasten the switchboard to the wall or pillar using the four holes in the rear wall of the switchboard and insert the connecting plugs as marked into the sockets in the lower part of the switchboard.

29) Insert the supply cable with the plug into the socket and **set the direction of rotation of the fan according to the arrow on the fan motor.**



Assembled dust collector including connected fan:

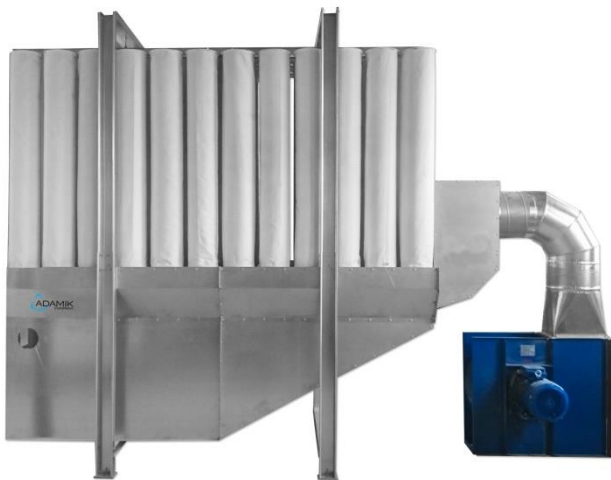
Series FT 630:



Series FT 650



Variant LZ (Silo instead of waste bags):



Variant LS (Rotary valve)





EC CERTIFICATE OF CONFORMITY EU PROHLÁŠENÍ O SHODĚ

Manufacturer / Výrobce:

Name / Název

ADAMIK Company, s.r.o.

Address / Adresa

Mitrovická 804, 739 21 Paskov, Czech Republic

Person authorized to complete the technical documentation /

Osoba zodpovědná za kompletaci technické dokumentace:

Name / Jméno

Ing Petr Adamík

Machinery / Strojní zařízení:

Product / Výrobek

Dust collector / Odsávací zařízení

Type / Typ

FT 630, FT 630 A, FT 630 SA, FT 630 LS, FT 630 LZ, FT 630 L,
FT 650, FT 650 A, FT 650 SA, FT 650 LS, FT 650 LZ, FT 650 L

Serial number / Výrobní číslo

.....

Machinery complies with technical requirements of / Strojní zařízení splňuje veškerá příslušná ustanovení:

• **Directive (Government Order) / Směrnice (Nařízení vlády):**

- European Parliament and Council Directive 2006/42/EC of 17th May 2006 on the machinery and harmonized Directive 95/16/EC (recast version) (Government Order no. 176/2008 Coll.)
/ Směrnice Evropského parlamentu a Rady 2006/42/ES ze dne 17. května 2006 o strojních zařízeních a o změně směrnice 95/16/ES (přepracované znění) (nařízení vlády č. 176/2008 Sb.)


• **Applied harmonized European Standards. / Harmonizovaných norem:**

ČSN EN ISO 12100:2011; ČSN EN ISO 13857:2008; ČSN EN 349+A1:2008; ČSN EN 614-1+A1:2009;
ČSN EN ISO 14120:2017; ČSN EN 894-2+A1:2009; ČSN EN 894-3+A1:2009; ČSN EN ISO 7010:2012;
ČSN EN ISO 13849-1:2017; ČSN EN ISO 14118:2018; ČSN EN 60204-1 ed. 2:2007

Place, date / Místo, dne: Paskov, 10.05.2019

Name and position of the person authorized to sign / Jméno a funkce osoby zmocněné k podpisu:

Ing. Petr Adamík, CEO / Ing. Petr Adamík, jednatel společnosti

ADAMIK Company, s.r.o.
CZ-190 00 PRAHA 2, Paříkova 910/9
IČ: 26845318  CZ26845318



EC CERTIFICATE OF CONFORMITY EU PROHLÁŠENÍ O SHODĚ

Manufacturer / Výrobce:

Name / Název ADAMIK Company, s.r.o.
Address / Adresa Mitrovická 804, 739 21 Paskov, Czech Republic

Person authorized to complete the technical documentation /

Osoba zodpovědná za komplekaci technické dokumentace:

Name / Jméno Ing Petr Adamík

Machinery / Strojní zařízení:

Product / Výrobek Dust collector / Odsávací zařízení
Type / Typ FT 630, FT 630 A, FT 630 SA, FT 630 LS, FT 630 LZ, FT 630 L,
FT 650, FT 650 A, FT 650 SA, FT 650 LS, FT 650 LZ, FT 650 L

Serial number / Výrobní číslo

Machinery complies with technical requirements of / Strojní zařízení splňuje veškerá příslušná ustanovení:

• **Directive (Government Order) / Směrnice (Nařízení vlády):**

- European Parliament and Council Directive 2014/35/EU of 26th February 2014 on the harmonization of the laws of Member States relating to electrical equipment designed for use within certain voltage limits (recast version), (Government Order no. 118/2016 Coll.) / *Směrnice Evropského parlamentu a Rady 2014/35/EU ze dne 26. února 2014 o harmonizaci právních předpisů členských států týkajících se dodávání elektrických zařízení určených pro používání v určitých mezích napětí na trh (přepracované znění), (nařízení vlády č. 118/2016 Sb.)*
- European Parliament and Council Directive 2014/30/EU of 26th February 2014 on the harmonization of the laws of Member States relating to electromagnetic compatibility (recast version), (Government Order no. 117/2016 Coll.) / *Směrnice Evropského parlamentu a Rady 2014/30/EU ze dne 26. února 2014 o harmonizaci právních předpisů členských států týkajících se elektromagnetické kompatibility (přepracované znění), (nařízení vlády č. 117/2016 Sb.)*

• **Applied harmonized European Standards. / Harmonizovaných norem:**

ČSN EN 60204-1 ed. 2:2007; ČSN EN 61000-6-2 ed.3:2006; ČSN EN 61000-6-4 ed.2:2007

Place, date / Místo, dne: Paskov, 10.05.2019

Name and position of the person authorized to sign / Jméno a funkce osoby zmocněné k podpisu:

Ing. Petr Adamík, CEO / Ing. Petr Adamík, jednatel společnosti

ADAMIK Company, s.r.o.
CZ-190 00 PRAHA 9, Paříkova 910/9
IČ: 25845318 SÚL: CZ268-5318

CERTIFICATE OF WARRANTY

The Certificate of Warranty is a document of the consumer in exercising his rights from liability for possible defects and belongs only to the product sold corresponding to the number as its accessories. Therefore, keep it in your own best interest. In the event of a complaint, this Certificate of Warranty must be submitted.

WARRANTY CONDITIONS

The product has been thoroughly tested before shipment and the manufacturer is responsible for its properties specified in the User manual. Provided that it is installed, used and operated in accordance with the instructions given in the User manual, we provide the consumer with a guarantee for its correct operation for a period of 12 months from the date of purchase.

At this time, the manufacturer will eliminate free of charge all defects in the product itself, or its accessories, caused by defects in the material used, or any manufacturing imperfections. The warranty is extended by the time for which the product was under repair, ie from the date of delivery to the repair after its repair.

The consumer loses the right to a one-time warranty repair if the detected defects were caused by improper use contrary to the User manual.

You will find a detailed description of the warranty conditions in the User manual for the respective machine in Article 9.

Any changes made by an unauthorized person in the Certificate of Warranty, its loss, damage to the product by an unavoidable event (natural disaster - lightning, fire, water, etc.), arbitrary changes in the design of the product, or interventions in the product by the consumer or another unauthorized person permanently void the warranty.

ADAMIK Company, s.r.o.
CZ-190 00 PRAHA 9, Pařkova 910/9
IČ: 26845318 DIČ: CZ26845318

CERTIFICATE OF QUALITY AND COMPLETENESS OF THE PRODUCT

Dust collector:

- FT 630
- FT 630 L
- FT 630 LS
- FT 630 LZ
- FT 650
- FT 650 L
- FT 650 LS
- FT 650 LZ

Filter regeneration:

- without
- SA
- A
-

Fan:

- VAN 828 3 kW
- VAN 831 4 kW
- VAN 831 7,5 kW
- VAN 835 9,2 kW
- VAN 840 11 kW
-

Serial number:	Checked by:	Date:
-----------------------	--------------------	--------------

Date of sale:	Product handed over by:
----------------------	--------------------------------

Service / repair report:

Date of acceptance:	Description:	Date and signature:

ADAMIK Company, s.r.o.
Paříková 910/9, 190 00 Praha
Czech Republic

Showroom a testing center:
Mitrovická 804, 739 21 Paskov
Czech Republic

VAT nr.: CZ26845318
Tel.: +420 774 883 858
e-mail: info@adamikcompany.com

www.adamikcompany.com